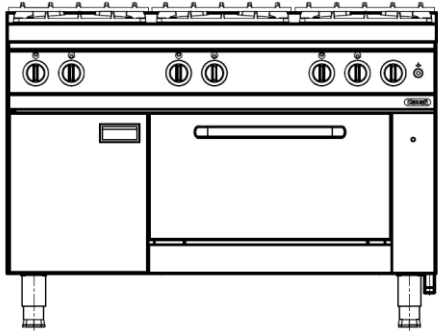




Total Food-Service Solutions

**Modular Gas Table Range
NGR 12-90 GR, Gas Prime Cooker
with Six Gas Burners and Oven**

ITEM# _____
MODEL# _____
NAME# _____
S/N# _____



Grandis Modular Gas Table Range

Gas Prime Cooker with Six Burners and Oven

NGR 12-90 GR SIX GAS BURNERS,
FLAME FAILURE FUNCTION,
CLOSED CABINET
AND OVEN

Short Form Specification

Item No. _____

Nayati Gas Range w/ Oven with 54.5 kW power rate. Oven temperature maintained by thermostat with maximum working temperature of 310°C, unit to be installed on open cabinet or similar elements, cantilever, or solid block solutions. Heavy-duty cast iron pan support included. Featuring removable clip joint to connect Meritus family product.

Main Features

- Durable Cast Iron pot holder.
- H2 Cabinet Finishing.
- Optional 6 x 10 kW Burner Power.
- Maximum oven working temperature of 310°C
- Easy oven hinge, which is removable for easier cleaning and maintenance.
- Oven Handle made from non heating material, to prevent injury during high temperature operation.
- Unit to be installed free standing, can be joined with base cabinet, table stand or cantilever system.
- Service maintenance can be done from the front panel.

Construction

- All exterior panels in 304 type of Stainless Steel
- Orbital top panel anti-scratch finishing.
- Top and side are mounted by 2.0 mm of Stainless Steel.
- Adjustable ±25 mm Stainless Steel leg.
- Certified IPX4 protection.

Included Accessories

- Grill Oven.
- Extra Nozzle (Main Burner & Pilot Burner).

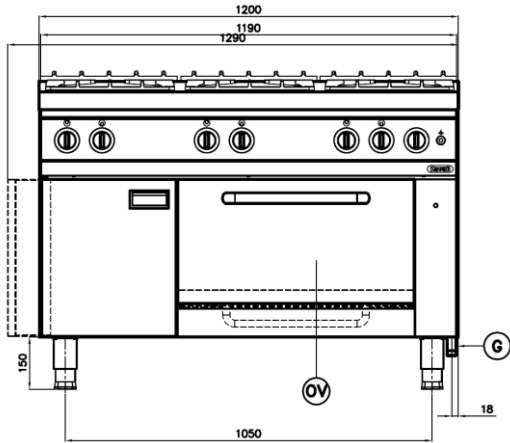
Optional Accessories

- Clip plate for joining.

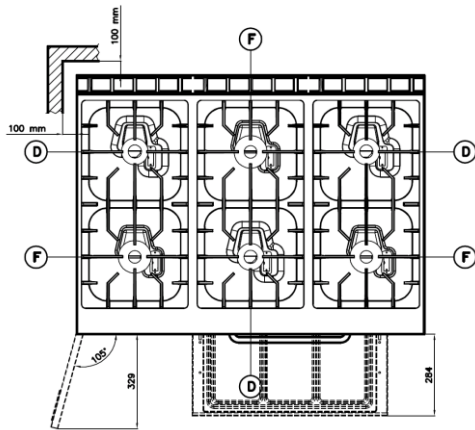
APPROVAL: _____

**Modular Gas Table Range
NGR 12-90 GR, Gas Prime Cooker
with Six Gas Burners and Oven**

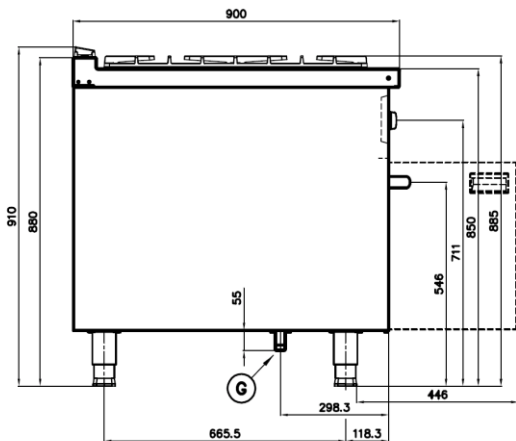
Front



Top



Side



- (G)** Gas Connection R 3/4"
- (F)** Open Burner 10 kW
- (D)** Open Burner 5.5 kW
- (OV)** Oven Burner 8 kW

* Overall Dimension in mm

Gas

Gas Power:	54.5 kW (46,870 kCal/h)
Gas Type Option:	G30/G31, G20
Gas Inlet:	R 3/4"
Natural Gas-Pressure:	G20: 20mbar
LPG Gas Pressure:	G30/G31: 28-30mbar/37mbar

Key Information:

Cooking Surface Open Burner:	3x(370x725)
Cooking Surface Oven	575x666x305
Direct heat emission:	11.63 kW
Direct heat emission (oven):	2.80 kW
Latent heat emission:	4.65 kW
Latent heat emission (oven):	1.60 kW
Steam emission:	6.84 kg /h
Steam emission (oven):	2.35 kg /h
Working Temperature MIN:	100°C (oven)
Working Temperature MAX:	310°C (oven)
Max Size Pan:	d:40 cm
Net Weight:	172 Kg
Shipping Height:	1020 mm
Shipping Width:	1255 mm
Shipping Depth:	995 mm
Shipping Volume:	1.274 m ³